



INTERCONTINENTAL®

LYON – HOTEL DIEU



LYON AS A DESTINATION



BY FLIGHT

Paris - Lyon: 1h10

Londres - Lyon: 1h40

BY TRAIN

Lyon - Paris: 2h00

Lyon - Marseille: 1h50

BY CAR:

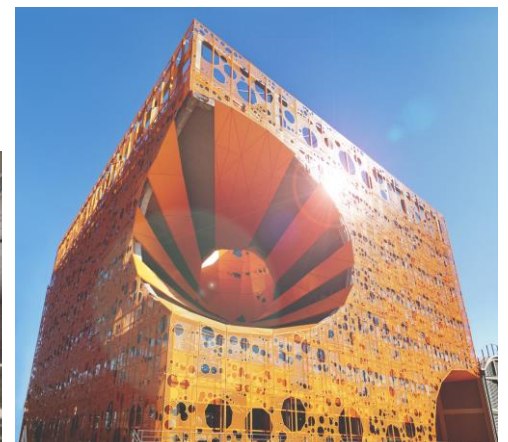
Lyon - French Alps: 2h

THE HOTEL IS:

- **30mn** drive from Airport
- **10mn** from TGV Part-Dieu station
- **8mn** drive from TGV Perrache station

**A HERITAGE CITY THAT HAS BEEN EVOLVING FOR 2000 YEARS!
UNESCO SITE SINCE 1998**

162 buildings are today classified as Historic Monuments
4 historical sites in the city all at walking distance

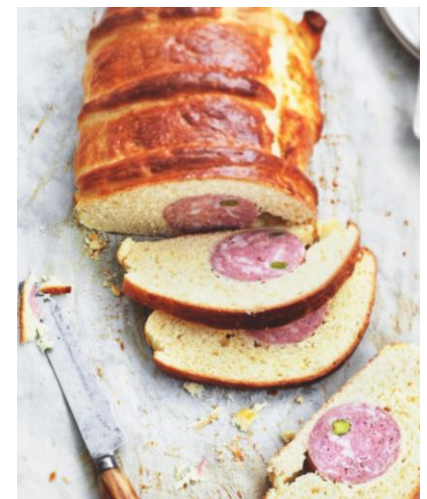


FRENCH CAPITAL OF GASTRONOMY!

4 000 Restaurants

20 Michelin Starred restaurants

Coming soon – The International City of Gastronomy (Fall 2019)



ART & FESTIVALS

More than 40 museums

Over 21,000 cultural and artistic events every year.

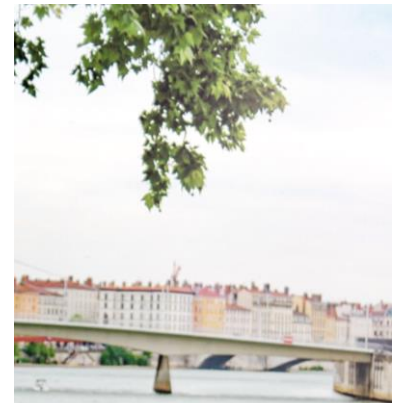
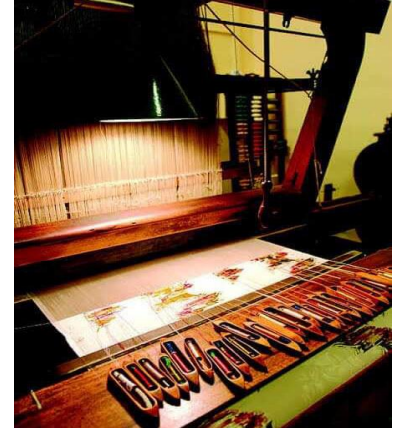
Mural frescos is a must to discover

Spectacular festival of lights during 4 amazing days in December



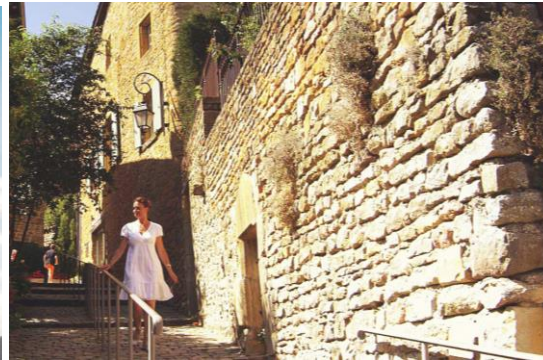
A DAY IN LYON : THE GENUINE FRENCH LIFESTYLE!

Nice walks along the 2 rivers, food halls & restaurants, sightseeing with 2000 years of history, discovery of the silk making industry and shopping!



MORE TO SEE AROUND LYON : RHONE ALPES AUVERGNE REGION

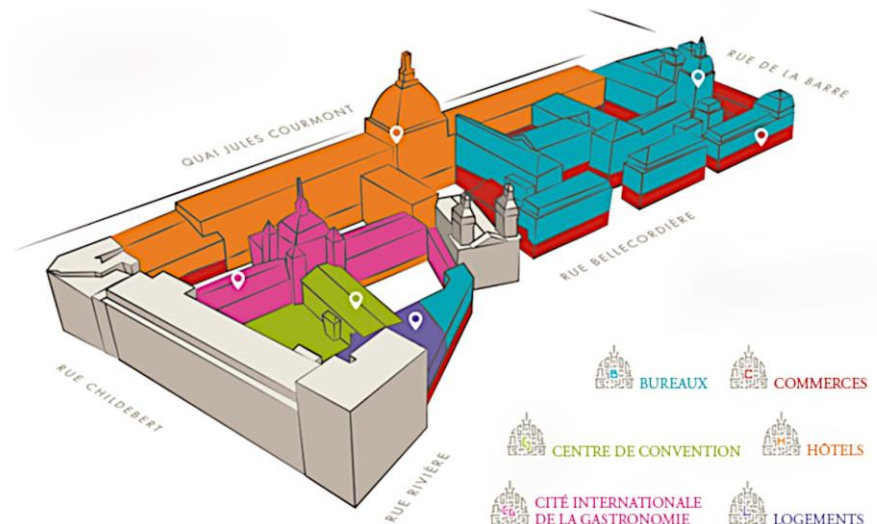
Golden Stones villages in the Beaujolais vineyards, volcanos, the Alps mountains, Annecy & Aix Les bains lakes.



GRAND HÔTEL-DIEU IS A DESTINATION

GRAND HOTEL DIEU

- **Heritage building** founded in the 12th C
- One of the most important **medical center** in France. Place of birth & life with a maternity till 2010.
- **The Grand Dôme**, Lyon's most iconic building by Jacques Germain Soufflot in the 18th C.
- **10 years project** to become a unique experience of the genuine French lifestyle



INTERCONTINENTAL LYON - HOTEL DIEU

A TREASURED HISTORICAL ICON REBORN IN THE FRENCH CAPITAL OF GASTRONOMY

Best location & luxuriest hotel
in town

144 Rooms including
35 Suites

EPONA restaurant & Terrace

LE DÔME bar

Club Lounge

Heritage hallways

The ACADEMIE by
InterContinental Convention
Center (1500 sqm)



FRONT DESK



CONCIERGE LOUNGE



ROOMS WITH VIEW OVER THE RHONE RIVER, CLOISTERS AND GARDENS



ROOMS WITH VIEW OVER THE RHONE RIVER, CLOISTERS AND GARDENS



Club Lounge

PRESIDENTIAL SUITE



L'ACADEMIE by InterContinental

1,500 sqm : 12 meeting rooms - Plenary of 433 sqm - Daily light and cloister views




L'Académie
By INTERCONTINENTAL



The Restaurant EPONA*
Heritage dishes with a modern twist

Chef Mathieu Charrois

100 seats and outdoor terrasse 80 seats

*Epona was the goddess of travellers loved by local people



The Bar

LE DÔME

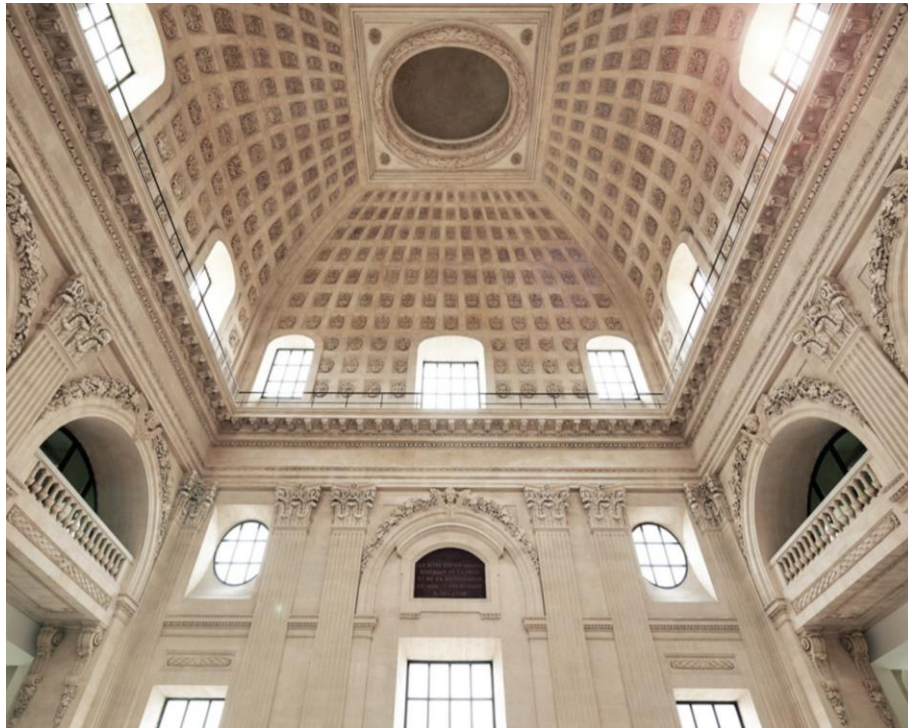
32 metres high

18th Century

Built by

Jacques- Germain

Soufflot



Merci!



INTERCONTINENTAL®

LYON - HOTEL DIEU

